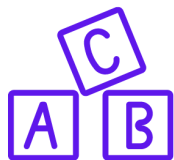


# ABECEDARIO EN MAYÚSCULAS Y MINÚSCULAS



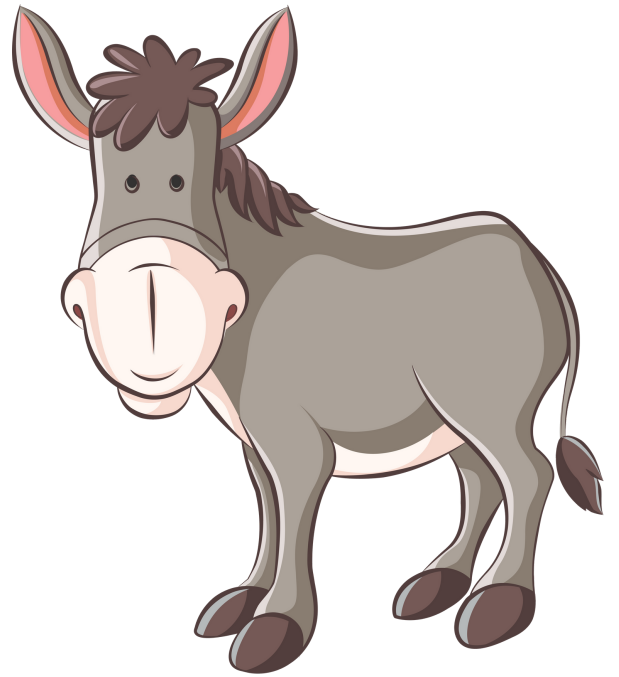
Mi**a**bc**d**ario.com

**Agua**



**Aa**

**Burro**



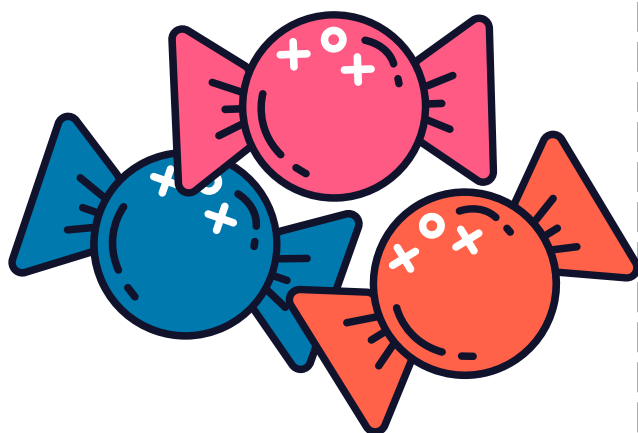
**Bb**

Casa



Cc

Dulce



Dd

# Flores

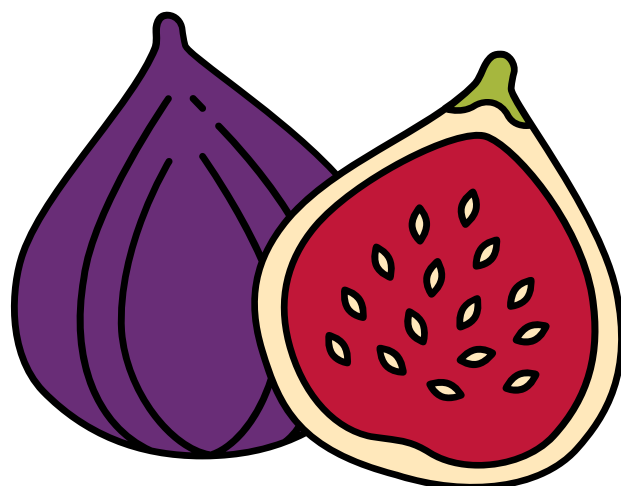


Gallo



G g

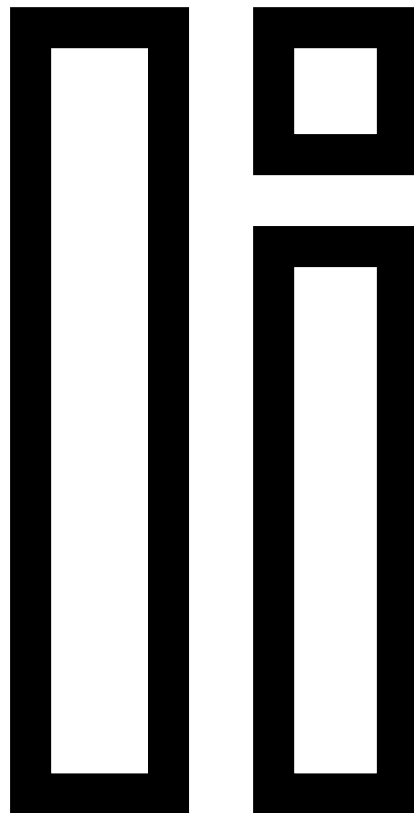
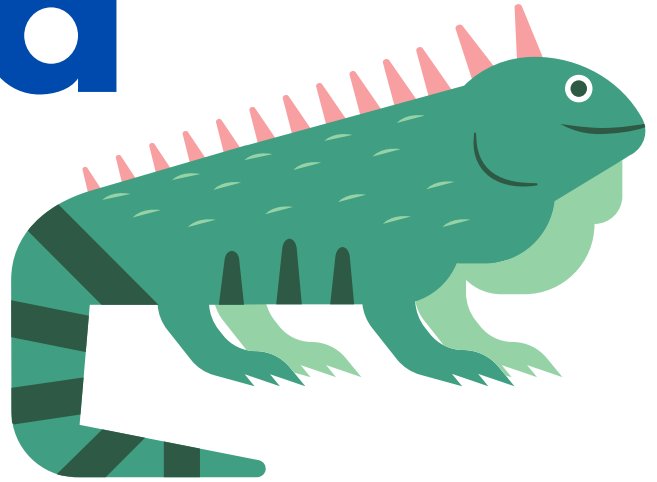
Higo



H h



# Iguana

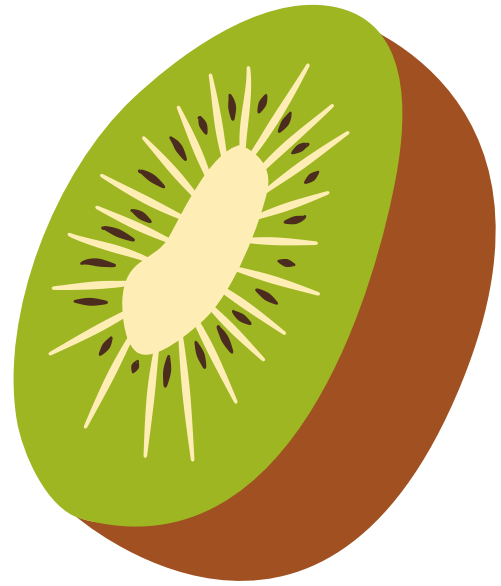


# Jarra



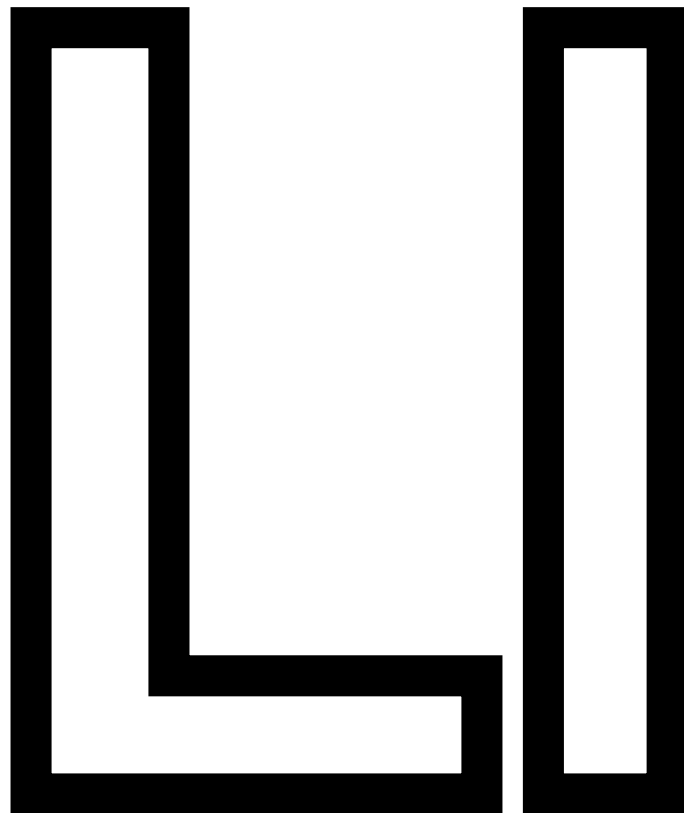
J j

Kiwi

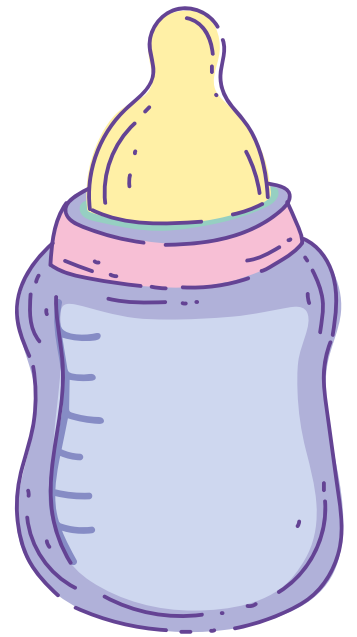


Kk

Loro

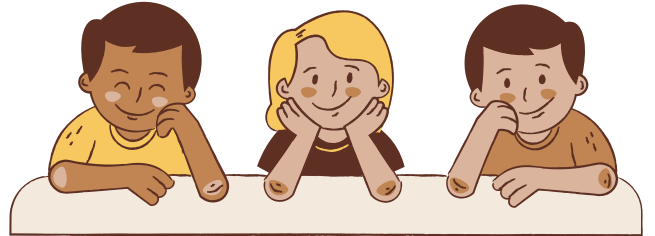


**Mamila**



**M m**

# Niños



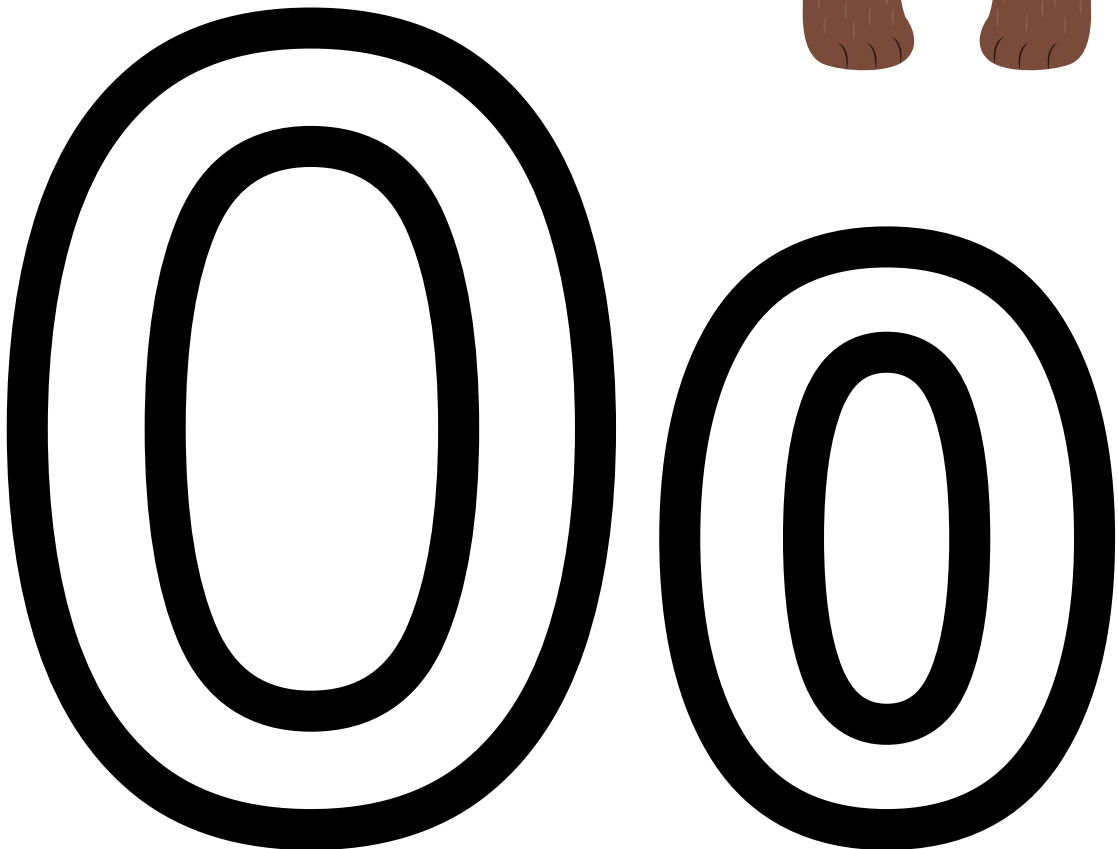
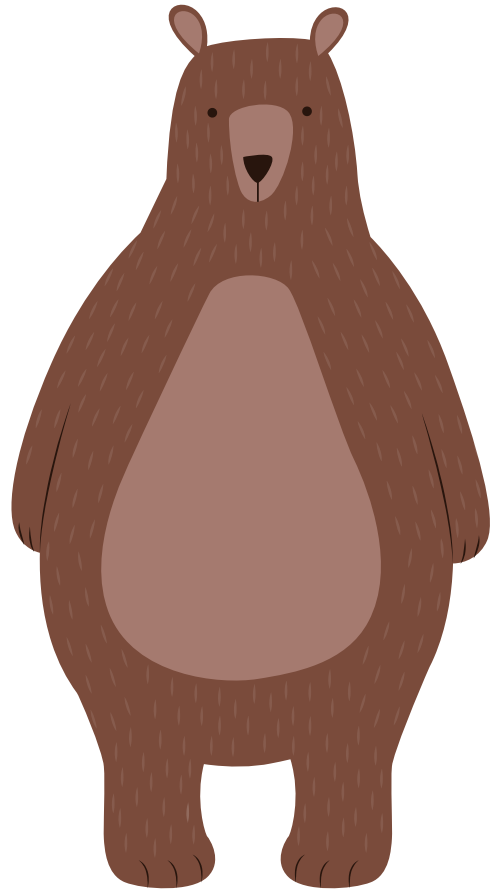
# Nn

Ñu



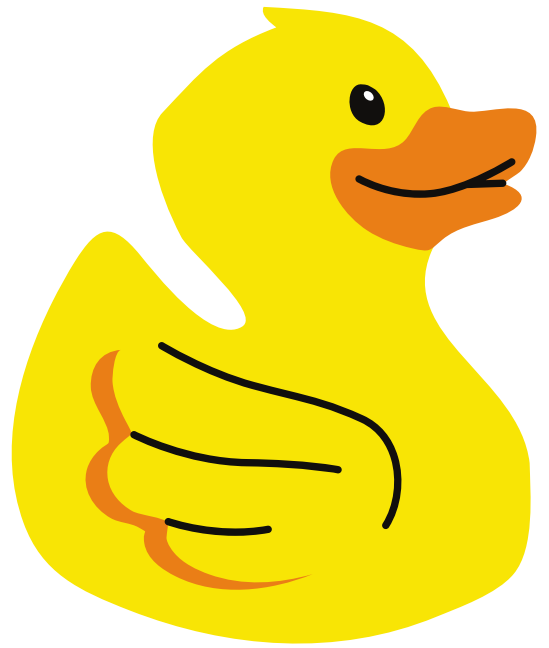
Ñ ñ

Oso



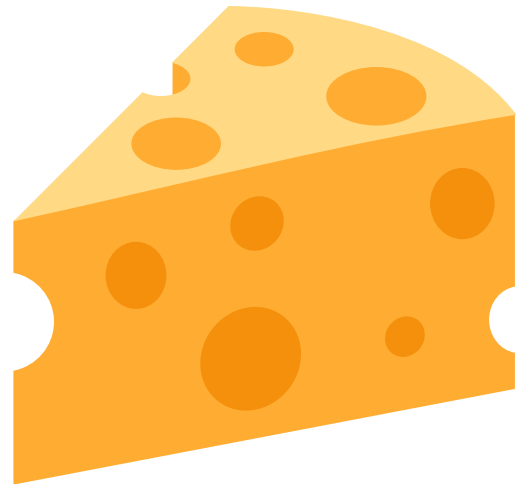


**Pato**



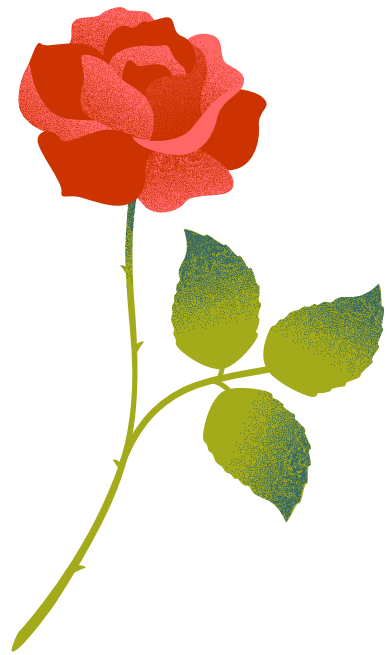
**P p**

**Queso**



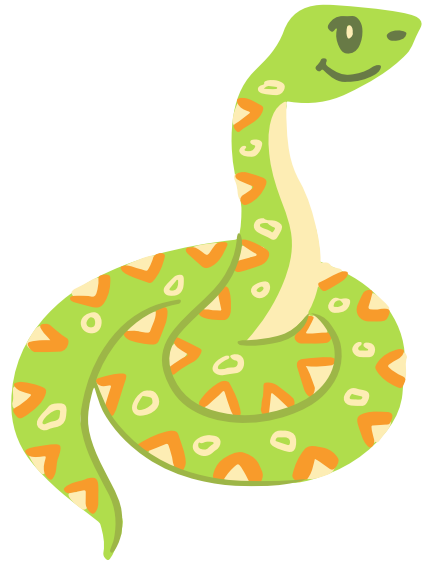
**Q q**

**Rosa**



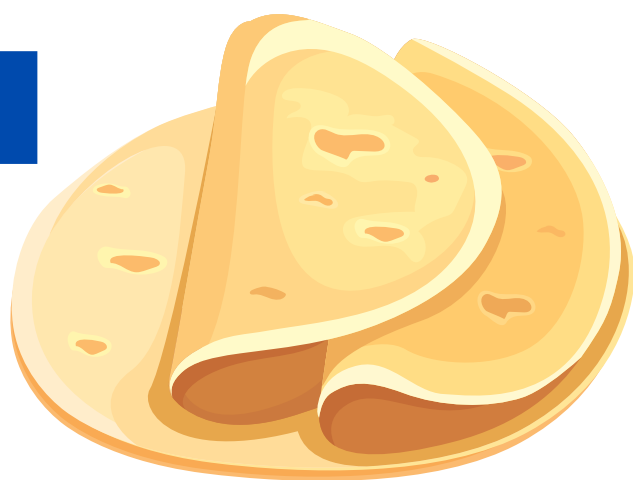
**Rr**

# Serpiente



S s

# Tortilla



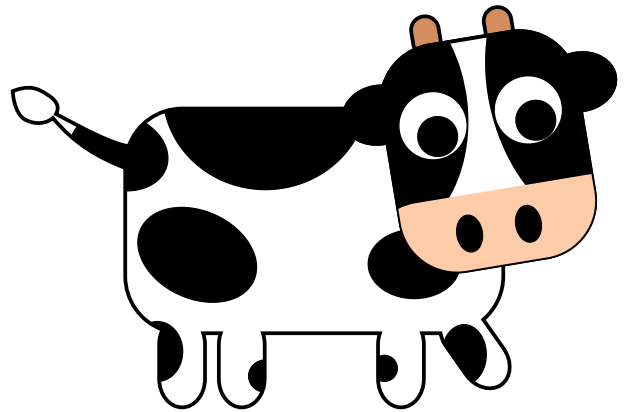
# Tt

# Ukelele

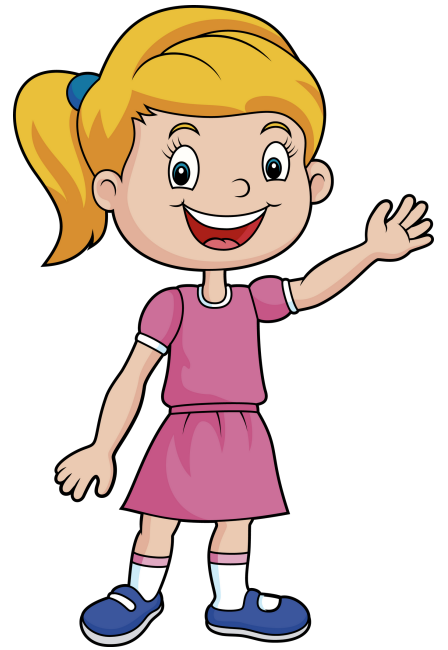


U u

Vaca

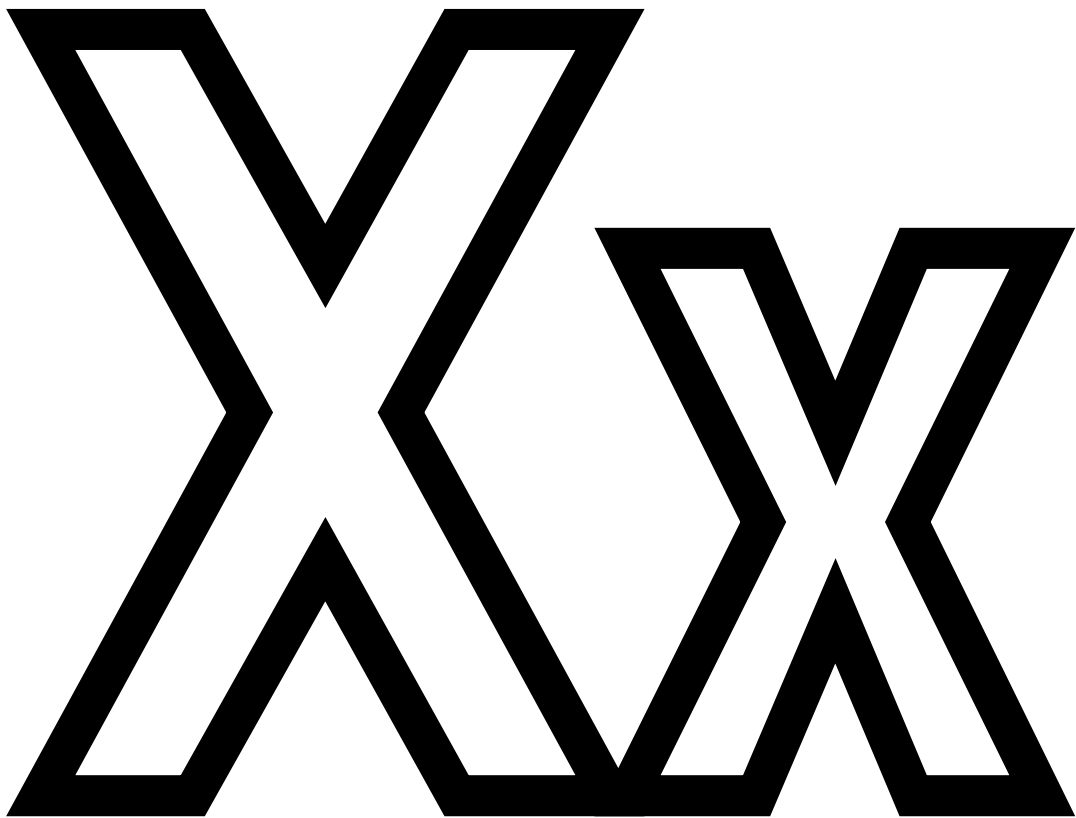


# Wendy

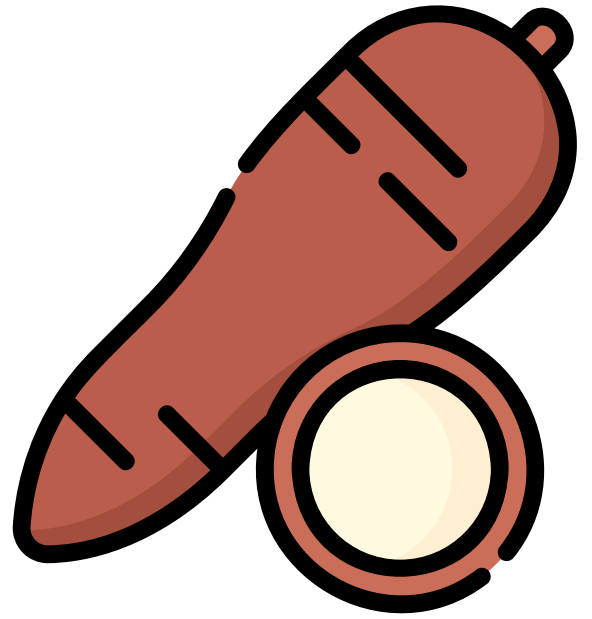




# México



Yuca



Y y

Zorro

